

CLEANMAX

OPERATING INSTRUCTIONS

FOR CLEANMAX DRY CANISTER VACUUM
MODEL: CMDC-12



Before operating the vacuum,
please read these instructions completely.

Index

Important Safety and Grounding Instructions	3
Parts Identification	4
How to Assemble and Operate the Vacuum.	5
How to Replace the Vacuum Bag	5
Floor Brush Adjustment	6
How to Clean or Replace the Filter	6
Circuit Breaker Protection.	7
For Best Performance.	7
Disposal	7
Technical Specifications.	8
Replacement Bags and Filters.	8
Troubleshooting	8

Customer's Record

The model and serial numbers of this product may be found on the unit. You should complete the enclosed warranty card and mail it back to us as soon as possible for your protection. Also, note the model and serial numbers of your unit in the spaces provided below, and retain this book as a permanent record of your purchase.

Model Number: _____

Serial Number: _____

Date Purchased: _____

Your CleanMax vacuum cleaner is a product of high quality materials and superior workmanship. We urge you to read these operating instructions carefully before you use this vacuum cleaner, in order to obtain the full performance and satisfaction it can offer you.

Save These Instructions

Before you plug in your CleanMax vacuum cleaner, make sure the voltage indicated on the rating plate located on the vacuum cleaner is the same as your local supply.

SAVE THESE INSTRUCTIONS FOR FUTURE REFERENCE

When using an electrical vacuum cleaner, basic precautions should be followed.
Read all instructions before using vacuum cleaner.

WARNING

IMPORTANT SAFETY INSTRUCTIONS:

WARNING: To reduce the risk of fire, electric shock or injury:

FOR COMMERCIAL USE ONLY.

Do not leave machine unattended when plugged in. Unplug from outlet when not in use and before changing bags or attempting any maintenance or adjustment.

To avoid electrical shock, use indoors only. Do not use outdoors and do not expose to rain.

Use only as described in this manual. Use only manufacturer's recommended attachments.

Do not use with damaged cord or plug.

If machine is not working as it should, has been dropped, damaged, left outdoors, or dropped into water, return it to a service center.

Do not pull or carry by cord, use cord as a handle, close a door on cord, or pull cord around sharp edges or corners. Do not run machine over cord. Keep cord away from heated surfaces. Do not unplug by pulling on cord. To unplug, grasp the plug not the cord. Do not handle plug or machine with wet hands.

Keep hair, loose clothing, fingers, and all parts of body away from openings and moving parts.

Turn off all controls before unplugging.

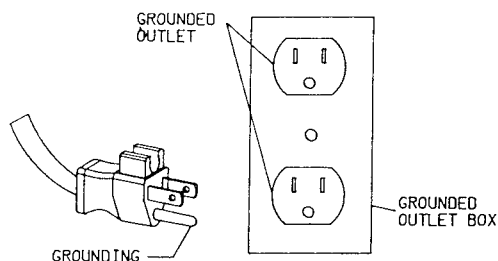
Connect to a properly grounded outlet only. See Grounding Instructions.

Do not put hands under base. Always keep hands, feet and loose fitting clothing away from base to prevent possible injuries. Use care to keep electrical supply cable from being run over by the vacuum.

Risk of explosion: Use this machine only in a well ventilated area, free from any flame or match. Do not use machine in areas where flammable and/or explosive vapors or dust are present.

Make sure voltage and frequency at the wall power receptacle correspond with that indicated on name plate before plugging in machine. A 20 amp circuit is recommended.

Use only a 12 gauge, three-wire extension cable which has a 3-prong grounding type plug and a 3-prong receptacle that accept the machine's plug.



SAFETY PRECAUTIONS

BEFORE OPERATING MACHINE

WARNING: Failure to adhere to these instructions could result in serious bodily injury or property damage.

Read this manual completely before attempting to operate machine. This manual has important information for the use and safe operation of the machine. Keep this manual on file and handy.

GROUNDING INSTRUCTIONS

WARNING: Improper connection of the equipment-grounding conductor can result in a risk of electric shock. Check with a qualified electrician or service person if you are in doubt as to whether the outlet is properly grounded. Do not modify the plug provided with the appliance. If it will not fit the outlet, have a proper outlet installed by a qualified electrician.

This appliance must be grounded. If it should malfunction or breakdown, grounding provides a path of least resistance for electric current to reduce the risk of electric shock. This machine is equipped with a cord having an equipment-grounding conductor and grounding plug. The plug must be inserted into an appropriate outlet that is properly installed and grounded in accordance with all local codes and ordinances. This appliance is for use on a nominal 120-volt circuit, and has a grounding plug that looks like the plug illustrated in Sketch A.

NOTE: In Canada, the use of a temporary adapter is not permitted by the Canadian Electrical Code.

EXTENSION CORD

If an extension cord is used, use only a three wire, 12 gauge extension cord that has a three prong grounding type plug and a three prong receptacle that accepts the machine's plug. This machine is equipped with a 14 gauge power cord. Replace or repair all damaged cords.

WHEN THE MACHINE IS DELIVERED

If machine is damaged, notify the carrier immediately and request an inspection. Be sure to keep the carton, packing inserts, packing lists, and carrier's receipt until the inspector has verified your claim.

Parts Identification



DESCRIPTION OF THE APPLIANCE

1. Floor brush
2. Telescopic wand
3. Suction control
4. Hose
5. Suction inlet
6. On/off button
7. Post filter cover
8. Top cover latch
9. Carrying handle
10. Suction relief valve
11. Power cord hook
12. Upholstery tool
13. Crevice nozzle
14. Secondary filter
15. Filter retainer
16. Dust bag

How to Assemble and Operate the Vacuum

Figure 1

Insert the hose (4) into the suction hole (5) and turn it clockwise to lock hose in place.

Figure 2

Connect tube (2) and the suction hose (4) together.

Figure 3

Attach the brush (1), or whichever accessory is required, to the tube (2).

Figure 4

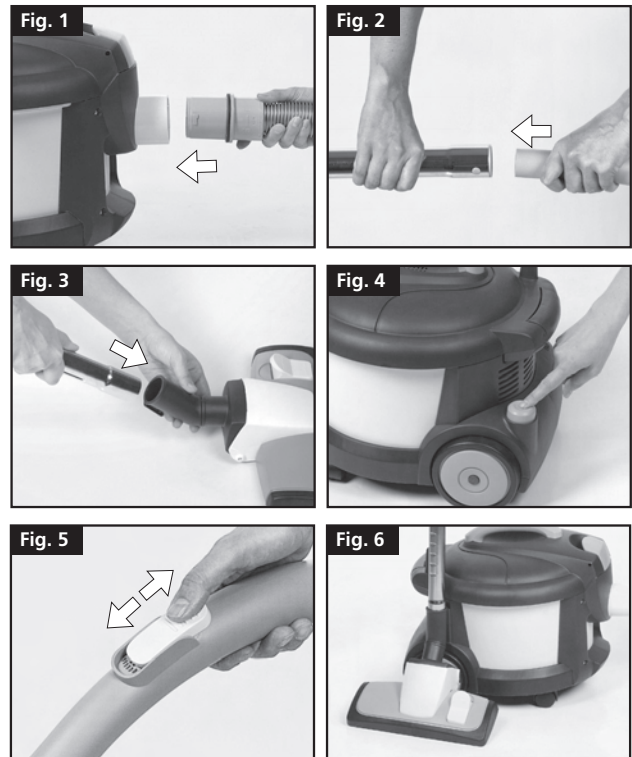
Ensure that the dust bag (16) has been fitted correctly, holding the power cord by the plug, plug it into the main supply. Press the on/off button (6).

Figure 5

Suction intensity can be regulated from the hand grip. Opening the flap (3) reduces suction, whereas closing it increases suction.

Figure 6

During pauses in vacuuming, you can slide the catch on the brush into the groove at the rear of the appliance.



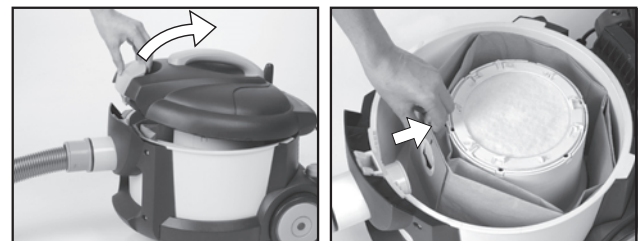
How to Change the Vacuum Bag

When the safety valve makes a sound and opens automatically, and the suction power decreases considerably, the dust bag is full. To change it, proceed as follows:

Lift the release latch in the direction of the arrow and open the top cover.

Remove the dust bag and replace it with a new one.

Place the rubber ring of the dust bag carefully over the inner part of the suction hole. Close the top cover and fasten latch.

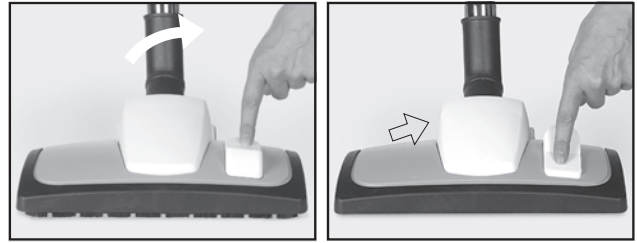


Floor Brush Adjustment

The general purpose floor brush supplied with this model has two different sweeping positions.

Press the button on the brush to the backward position and the bristles at the front of the brush come out which, together with the two rear wheels, makes it easier to move across all types of surfaces.

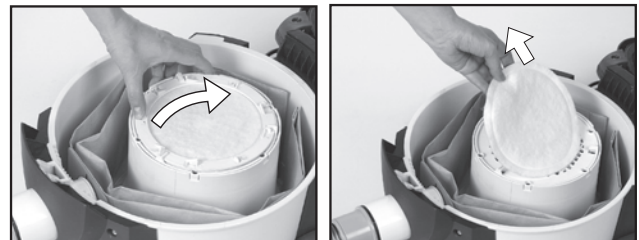
Press the button on the brush to the forward position and the bristles at the front of the brush retract to produce more efficient suction on carpets and rugs.



How to Clean or Replace the Filter

Turn the filter retainer clockwise to the position where it can be removed from the filter.

Take the motor inlet filter out and tap it. If it is very dirty, it should be rinsed. After cleaning, leave them to dry thoroughly. Place the filter retainer back by turning it counter clockwise to lock.



Important

Clean or change the filter whenever any type of blockage occurs with the suction.

To guarantee trouble-free operation, use only CleanMax parts.

Replace the filter after having changed the paper dust bags at least once a year.

Circuit Breaker Protection


MAINTAINING SUCTION SYSTEM


This professional vacuum cleaner works with a safety valve which will function automatically to prevent the motor from overheating when blockage occurs with the suction system.

For Best Performance

- Keep machine and all accessories clean and in good operating condition.
- Change vacuum bags and clean filter as recommended to maintain optimum cleaning efficiency.
- Always use genuine bags, filters and parts, as use of other products may result in poor cleaning or filtration performance. CleanMax filtration products are designed for maximum performance.
- Have machine checked periodically by the retailer where you purchased your CleanMax vacuum.
- Store machine carefully in dry area.
- For optimum cleaning performance and safety, follow your owner's manual.

Disposal

 **ADVICE ON DISPOSAL:** Our goods come in optimized packaging. This basically consists in non-contaminating materials which should be handed over to the local waste disposal service as secondary raw materials.

 This product complies with EU Directive 2002/96/CE. The crossed wheelie bin symbol shown on the appliance indicates that when it comes to dispose of the product it must not be included in with household refuse. It must be taken to a special refuse collection point for electric and electronic appliances or returned to the distributor when purchasing a similar appliance. Under current refuse disposal regulations, users who fail to take discarded appliances to special refuse collection points may be penalized. Correct disposal of discarded appliances means that they can be recycled and processed ecologically, helping the environment and allowing materials used in the product to be reused. For more information on available waste disposal schemes contact your local refuse service or the shop where the product was purchased. Manufacturers and importers are responsible for ecological recycling, processing and disposal of products, whether directly or via a public system. Your local town council can provide you with information about how to dispose of obsolete appliances.

Technical Specifications

	Model CMDC-12
Voltage	120V
Vac motor	1 x 1200W
Vacuum lift	80 IOW
Sound pressure level	70 dB(A)
Cord length	30'
Weight empty	13 lbs.
Filtration	HEPA
Warranty	1 year

Replacement Bags and Filters

Part	Part no	Description
Disposable Paper Filter Bags (10 bags per pack)	CMHC-10PK	Pack of 10 Paper Bags
Exhaust Filter	CMHC-HEPA	Exhaust Filter
Motor Filter (2 required)	CMHC-27	Vacuum Inlet Filter Vacuum Motor Exhaust Filter

Trouble Shooting

Problem	Reason	Remedy
The vacuum does not turn on	<ul style="list-style-type: none"> • Power failure 	<ul style="list-style-type: none"> • Check the main fuse, the power supply cord and the plug. • Check the power switch located on body.
The vacuum is on, but the brush does not rotate	<ul style="list-style-type: none"> • Obstructions present • Damaged belt 	<ul style="list-style-type: none"> • Remove obstruction. • Remove belt cover, check belt and replace as necessary.

CLEANMAX

CleanMax Vacuum Cleaners
PO Box 730
Fenton, MO 63026

cleanmaxvacuums.com

©2011 CleanMax Vacuum Cleaners.