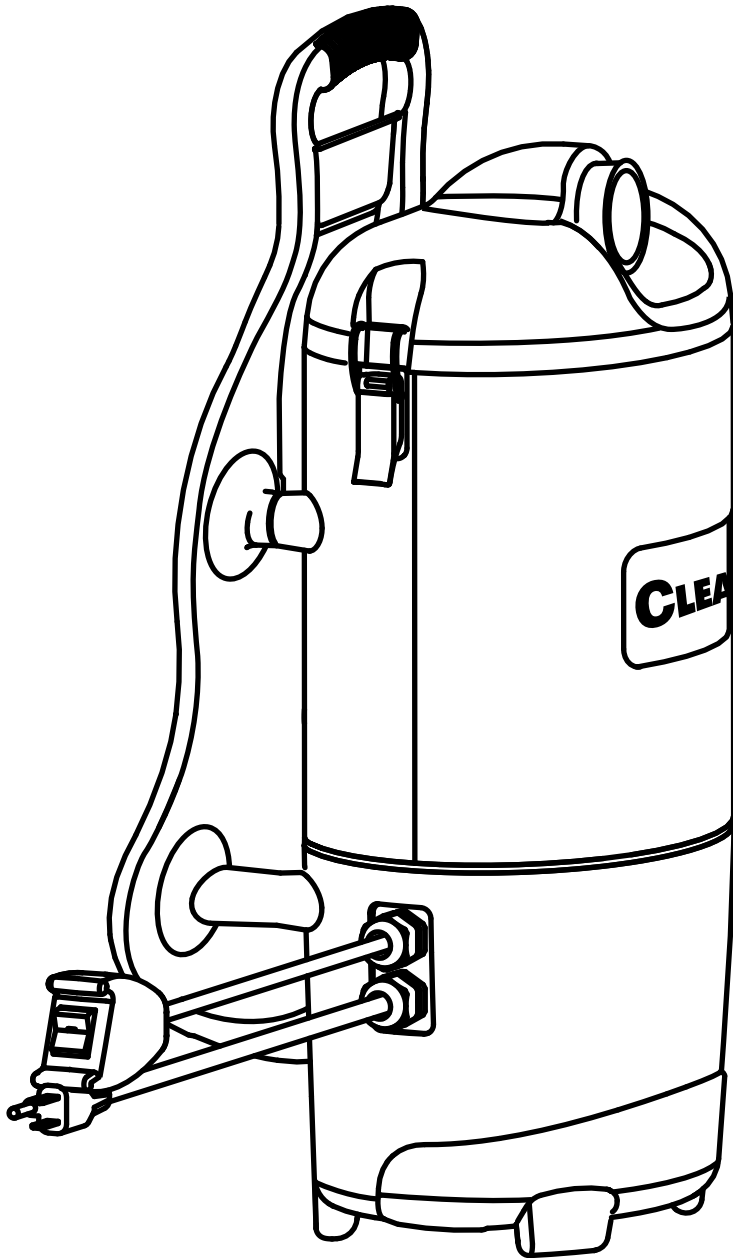


# CLEANMAX

## Model CMBP-6 Backpack Vacuum



### **OPERATING INSTRUCTIONS**

COMMERCIAL  
BACKPACK VACUUM CLEANER

#### **CONGRATULATIONS**

YOU HAVE JUST ACQUIRED A HIGH QUALITY VACUUM CLEANER. PLEASE READ THIS MANUAL CAREFULLY, BEFORE OPERATING YOUR NEW VACUUM CLEANER. KEEP MANUAL ON HAND FOR FUTURE REFERENCE.

**Save These Instructions**

# IMPORTANT SAFETY INSTRUCTIONS

## SAVE THESE INSTRUCTIONS FOR FUTURE REFERENCE

\*When using an electrical backpack vacuum cleaner, basic precautions should be followed.

\*Read all instructions before using vacuum cleaner.

### WARNING

This machine is not intended for use by persons (including children) with reduced physical, sensory or mental capabilities, or lack of experience and knowledge, unless they have been given supervision or instruction concerning use of the machine by a person responsible for their safety.

#### To reduce risk of fire, electric shock, or injury:

- Do not use outdoors or on wet surfaces.
- Do not leave vacuum cleaner unattended when plugged in. Turn off the switch and unplug the electrical cord when not in use and before servicing.
- Do not allow to be used as a toy. Keep children and unauthorized persons away from the machine when in use.
- Use only as described in this manual. Use manufacturer's recommended attachments.
- Do not use with damaged cord or plug. If vacuum cleaner is not working as it should, has been dropped, damaged, left outdoors, or dropped into water, return it to a service center before using.
- **WARNING** - The replacement or repair of damaged wiring should only be performed by a qualified electrician or service engineer from the original distributor or authorized service agent.
- Do not pull or carry by cord, use cord as a handle, close a door on cord, or pull a cord around sharp edges or corners. Do not run vacuum cleaner over cord. Keep cord away from heated surfaces.
- Do not use extension cords or outlets with inadequate current carrying capacity.
- Turn off all controls before unplugging.
- Do not handle plug or vacuum cleaner with wet hands.
- Do not put any objects into openings. Do not use with any opening blocked, keep free of dust, lint, hair, and anything that may reduce airflow.
- This vacuum cleaner creates suction. Keep hair, loose clothing, fingers, and all parts of body away from openings.
- Do not pick up anything that is burning or smoking, such as cigarettes, matches or hot ashes. Do not use without dust bag in place. Use extra care when cleaning on stairs.
- Do not use to pick up flammable or combustible liquids such as gasoline, or use in areas where they may be present.
- Store your cleaner indoors in a cool, dry area.
- Do not unplug by pulling on cord. To unplug, grasp the plug, NOT THE CORD.

**THIS MODEL IS GROUNDED, CONNECT TO A PROPERLY GROUNDED OUTLET ONLY - SEE GROUNDING INSTRUCTIONS.**

### GROUNDING INSTRUCTIONS

This appliance must be grounded. If it should malfunction or breakdown, grounding provides a path of least resistance for electric current to reduce the risk of shock. This appliance is equipped with a cord having an equipment-grounding conductor and grounding plug. The plug must be inserted into an appropriate outlet that is properly installed and grounded in accordance with all local codes and ordinances.

**WARNING** - Improper connection of the equipment-grounding conductor can result in a risk of electric shock. Check with a qualified electrician or service person if you are in doubt as to whether the outlet is properly grounded. Do not modify the plug provided with the appliance - if it will not fit the outlet, have a proper outlet installed by a qualified electrician. This appliance is for use on a normal 120 volt circuit, and has a grounded plug that looks like the plug illustrated in sketch A. A temporary adapter similar to that shown in fig. B and C may be used to connect this plug to a 2-pole receptacle as shown in fig. B if a properly grounded outlet is not available. The temporary adapter should be used only until a properly grounded outlet (fig. A) can be installed by a qualified electrician. The green colored rigid ear, lug, or the like extending from the adapter must be connected to a permanent ground such as a properly grounded outlet box cover. Whenever the adapter is used, it must be held in place by a metal screw.

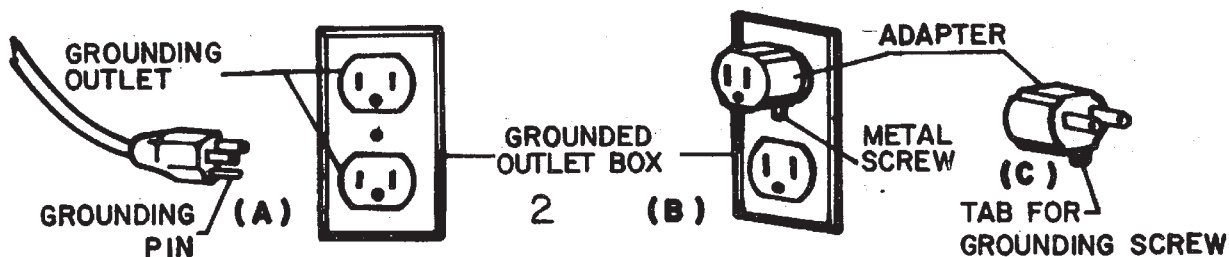
**Note:** In Canada, the use of a temporary adapter is not permitted by the Canadian Electrical Code.

### SAFETY PRECAUTIONS

- Do not vacuum water or liquids.
- Do not vacuum up hard or sharp objects, as they may damage the hose, vacuum bag or the vacuum motor.
- Do not drop the vacuum on the floor.
- Do not operate the vacuum while it is standing on high-pile carpet. It is essential that the exhaust airflow is not restricted.
- Do not wash or launder the cloth vacuum bag, doing so will destroy the filtration capacity of the fabric.
- Do not kink or twist the power cord.
- Do not attempt to service the vacuum yourself. Repair by anyone other than an authorized repair service center may void the warranty.

### MAINTENANCE

- Clean the cloth vacuum bag regularly. After emptying the vacuum bag, turn it inside out and shake as much dust out of the fabric as possible. Optimum performance is achieved by using a paper vacuum bag with the cloth bag.
- Check the power cord for damage. Always unwind the cable completely.
- Ensure that the vacuum hose, the extension wand and the vacuuming accessories are not blocked.
- Ensure the electrical outlet and the plug are securely connected. Incorrect connections may cause sparking and damage to the cable socket.
- Have your backpack vacuum serviced by an authorized repair service center if you suspect any potential problems.
- Use only approved paper vacuum bags.
- Ensure that the flexible vacuum bag ring provides a proper seal before vacuuming.



## OPERATION INSTRUCTIONS

Please read the following operating instructions carefully. They will help you to get the best performance from this professional quality vacuum cleaner and to maintain it in optimum condition.

### Follow these simple steps for easy and effective operation of the backpack vacuum

Open the lid and ensure that the cloth bag is correctly located and the flexible ring provides a proper seal when the lid is closed. For optimum filtration, it is advisable to use a paper vacuum bag in addition to the standard cloth bag.

If you use a paper vacuum bag, simply insert it into the cloth bag, making sure that the cardboard disk is centered on the flexible sealing ring. When you replace the lid, the short nozzle in the center of the lid will be forced into the central hole of the cardboard disk of the paper vacuum bag thus providing a tight seal. Make sure the paper vacuum bag is tightly secured over the short nozzle before vacuuming.

Lock the lid down with the two latches. Always ensure that the vacuum bag is empty before vacuuming. Your backpack vacuum comes equipped with a Manual Reset Thermal Fuse Protector. This thermal protector is designed to protect your backpack vacuum from overheating due to a cutoff in airflow (i.e. clogged hose). Should this situation occur, the thermal fuse protector will safely shut off your backpack vacuum to avoid any potential damage.

#### To reset the thermal fuse:

1. Unplug the vacuum cleaner. Locate and correct the problem (over filled bag, clog in hose, clogged filters, etc.).
2. Locate "tripped" fuse; the small red button located on the bottom of the main body.
3. Using a pencil, paper clip, or other pointy object, push the reset button.
4. Plug backpack vacuum in and begin using.

In addition, your backpack vacuum has been fitted with a thermal overload switch to protect the motor against damage should the airflow be blocked for extended periods. This may occur if the vacuum bag is too full or if the vacuum hose is blocked. The vacuum motor will stop before it can get too hot. If this happens, empty and thoroughly clean the vacuum bag or free any blockage and ensure that adequate airflow is restored. The motor will automatically restart after it has cooled to a safe operating temperature.

#### To vacuum with the backpack vacuum

1. The vacuum hose is fitted into the cuff in the lid. It should not be necessary to remove the hose in normal operation.
2. Place the backpack vacuum on your back, adjust the shoulder straps until you feel comfortable and then tighten the waist belt. The backpack vacuum is designed to ride higher on your back for maximum comfort.
3. Plug the cord into a 110 volt, grounded outlet. Always unwind the cord completely before vacuuming. It is important to maintain the power cord in good condition. This unit ships with a 50' 16AWG x 3 conductor SJT extension cord. Always use a 16x3 SJT extension cord when operating this unit. Use care when pulling the cord around sharp edges and through doorways. **Never operate the Backpack vacuum if the power cord is damaged in any way.**
4. Attach the extension wand to the hose and fit the floor tool or any of the other vacuum accessories on the wand.
5. Turn the vacuum on. The toggle switch is located on the switch box. You may clip the switch box to the waist belt.

#### To change the vacuum bag.



Turn off main power switch and unplug unit from wall outlet.



Remove vacuum hose from top of unit.



Release the two latches and lift off lid.



Separate lid from paper bag insert and dispose of paper bag.

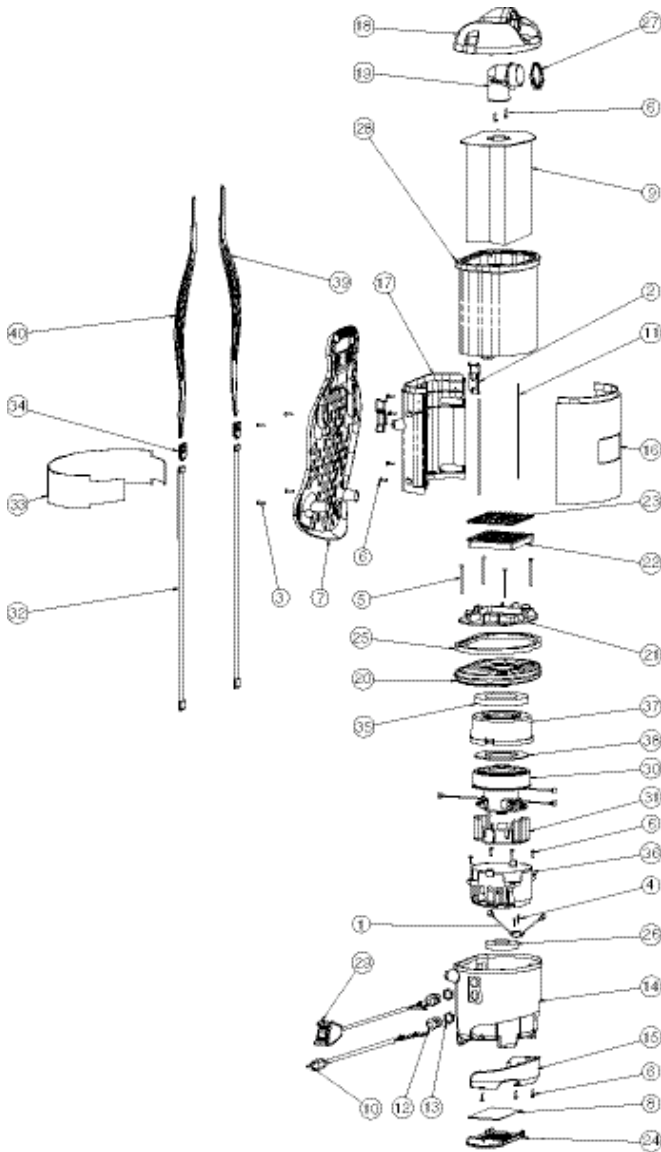


Remove cloth filter bag, clean, dust and replace.



Insert new paper bag making sure to align lid nozzle with bag hole and replace latches.

## Model CMBP-6



ref #	item #	description
1	54.110	THERMAL PROTECTION SWITCH
2	54.112	LATCH
3	A352-8100	#10 .750 TYPE B PHILIPS PAN HEAD SCREW
4	A352-8200	#6 X .375 HI-LO PHILIPS PAN HEAD SCREW
5	A430-0205	#8-16 X 2.500 PHILIPS PAN HEAD SCREW
6	A732-8300	#8 X .625 HI-LO PHILIPS PAN HEAD SCREW
7	54.100	BACK REST ASSEMBLY 32, 33, 34, 39, 40
8	06.011	POST FILTER
9	CMBP-10	PAPER BAG - 10 PACK
10	B352-3200	POWER HARNESS
11	B352-6100	BAG COMPARTMENT SEAL
12	B352-6800	STRAIN RELIEF
13	B352-6800-NUT	STRAIN RELIEF NUT
14	54.101	MOTOR COMPARTMENT
15	B352-0200	BUMPER
16	CMBP-FP	FRONT PLATE
17	CMBP-BP	BACK PLATE
18	54.111	COVER
19	54.107	HOSE INLET
20	B352-0700	MOTOR COVER
21	54.106	SECONDARY FILTER PLATE
22	06.434	SECONDARY FILTER PLEATED
23	54.105	SECONDARY FILTER CAP
24	54.104	POST FILTER FRAME
25	54.103	BODY SEAL
26	B352-1900	BOTTOM MOTOR MOUNT
27	B352-4800	INLET SEAL
28	06.083	SHAKE OUT BAG
29	C352-2800	SWITCH HARNESS
30	20.011	5.1" SINGLE STAGE MOTOR
31	B113-0915	MOTOR SHROUD PC
32	B352-5800	SHOULDER HARNESS STRAP
33	B352-6600	WAIST BELT
34	B352-6700	SHOULDER STRAP BUCKLE
35	B352-1800	TOP MOTOR MOUNT
36	B352-5300	MOTOR SHROUD BOTTOM 5.1 - 1 STAGE
37	B352-5400	MOTOR SHROUD TOP 5.1 - 1 STAGE
38	B352-5500	MOTOR SEAL
39	B352-5600	RIGHT SHOULDER HARNESS
40	B352-5700	LEFT SHOULDER HARNESS
NOT ILLUSTRATED		
	05.160	CREVICE TOOL
	05.161	UPHOLSTRY TOOL
	10.308	DUST BRUSH TOOL ASSEMBLY
	10.310	CARPET TOOL ASSEMBLY
	10.309	BARE FLOOR TOOL
	19.452	HOSE ASSEMBLY
	26.125	TELESCOPIC WAND
	14.206	50' EXTENSION CORD 16-3 SJT YELLOW

## CLEANMAX BACKPACK VACUUM

The manufacturer warrants to the original purchaser that the CleanMax Backpack Vacuum is free from defects, provided it is operated and maintained in accordance with written manuals or other instructions for a period of one year from date of purchase on workmanship, motor, and parts. If service is required, please return to place of purchase.

# CLEANMAX